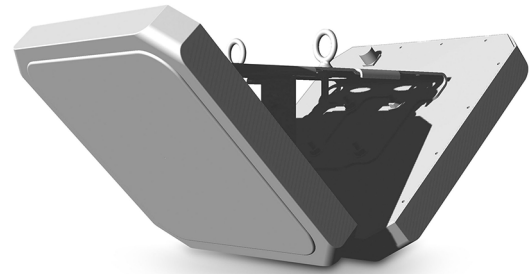


Zebra SR5502 Backroom and Warehouse RFID Antenna

Dual RFID antenna to track inventory in the backroom from “arrival to departure”

Start the tracking cycle by detecting and recording the movement of RFID-tagged inventory from the moment it enters your backroom to the moment it leaves. Handle high tag volumes with increased accuracy and read rates. Installation is simple—just mount the supplied bracket and insert the Backroom SmartLens Sensor. Eliminate the need to install power outlets with Power-over-Ethernet (PoE)—ideal for typical complex backroom environments. Easily deploy by just turning on the device and you’re up and running.



SR5502 Specifications

PHYSICAL CHARACTERISTICS	
Polarization	Left-hand circular
Dimensions	432 mm x 254 mm x 178 mm/ 17.0 in. x 10.0 in. x 7.00 in.
Connector	N-Type Female x 2
Connector Location	Rear
Mounting Options	Integrated mounting bracket
Weight	2.5 kg/5.5 lbs
Casing/Materials	Aluminum with white plastic cover

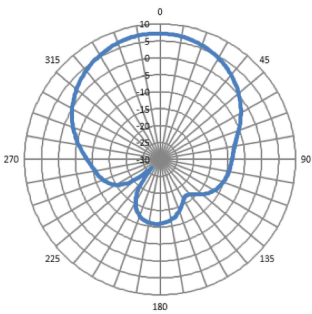
Frequency Ranges	865–956 MHz
Gain	US: 6.7 dBiL; EU: 2 dBiL
3 dB Beam Width	83° x 84°/71° x 67°
Maximum Power	18 Watts (37-55 VDC POE)
Operating Temperature	-20° to +55°C/-4° to +131°F
Storage Temperature	-40° to +70°C/-40° to +158°F
Humidity	95% RH non-condensing

Vertical Markets

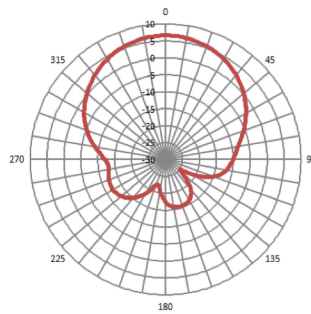
- Retail
- Warehouse Management
- Manufacturing

Applications

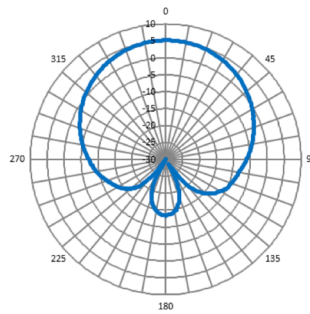
- Stock room aisles
- Flush mount ceiling or wall applications
- Receiving and staging areas
- Open work areas



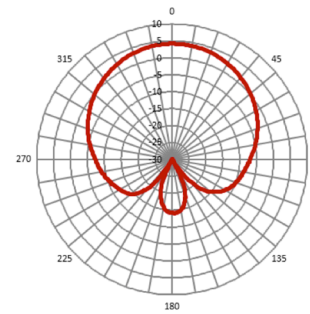
Horizontal (FCC)



Vertical (FCC)



Horizontal (ETSI)



Vertical (ETSI)